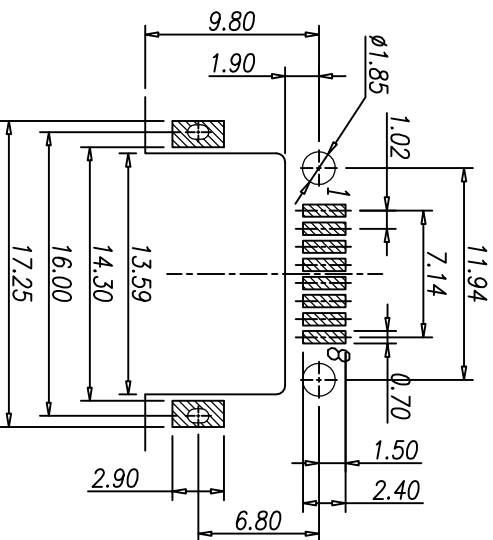
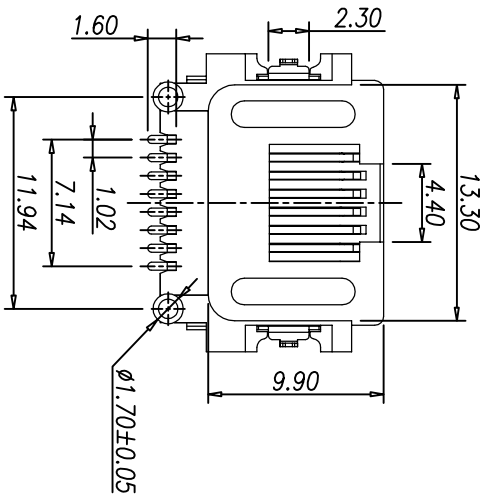
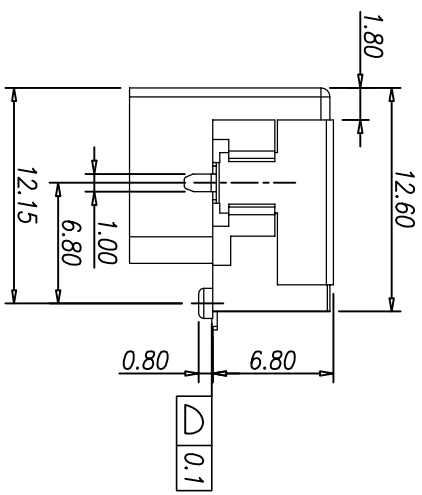
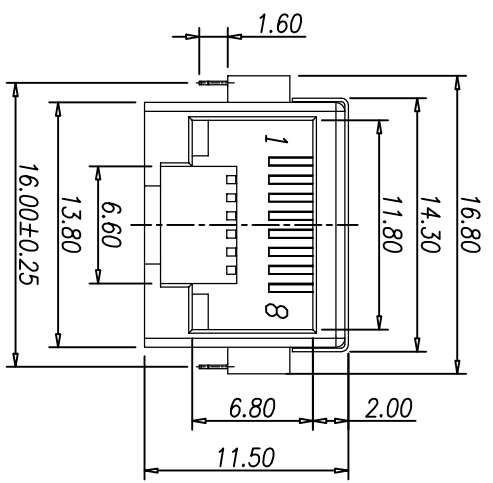


CATEGORY	DESCRIPTION	P/N #
CONNECTOR	RJ45 沉板H6.8 (长铜壳脚)	MJ88-BX11-HLSV6A-X

REV.	ECN NO	DESCRIPTION	REVISED	DATE
A01	—	New Release	XSY	2018.09.29



- NOTE:
1. Voltage: 150V AC RMS
 2. Current Rating: 1.5A
 3. Contact Resistance: 40mΩ MAX.
 4. Insulation Resistance: 500MΩ MIN.
 5. Dielectric Withstand Voltage :1000V AC
 6. Operature Temperature: -40°C~80°C
 7. Durability: 750 Mating Cycles MIN.

Plating

X	Terminal Plating
0	Au 1u" Plating
1	Au 3u" Plating
2	Au 6u" Plating
3	Au 15u" Plating

X	包装方式
C	卷带包装
P	吸塑盒包装

铜壳脚加长款

MJ88-BX11-HLSV6A-X

c	Shielding	1	Brass T=0.2mm	Ni Plating			
b	Terminal	8	Phosphor Bronze T=0.3mm	Au Plating			
a	Housing	1	LCP UL94V-0	BLACK			
NO.	PART NAME	Q'TY	MATERIAL				Remark

Recommend PCB Layout
(Jack Top View)
Tolerance: ±0.05mm

东莞市合陵电子有限公司
 DongGuan Heling Electronic Co.,LTD

SCALE: 1/1	UNIT: mm	DWG. NO:
SIZE: A3	PAGE: 1 OF 1	REV: A01
APPROVED BY	CHECKED BY	PREPARED BY
DICK	XSY	XSY

CUSTOMER COPY

A

3

2

1